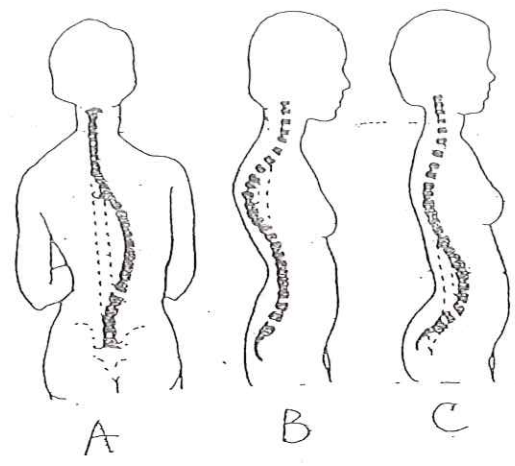


Name.

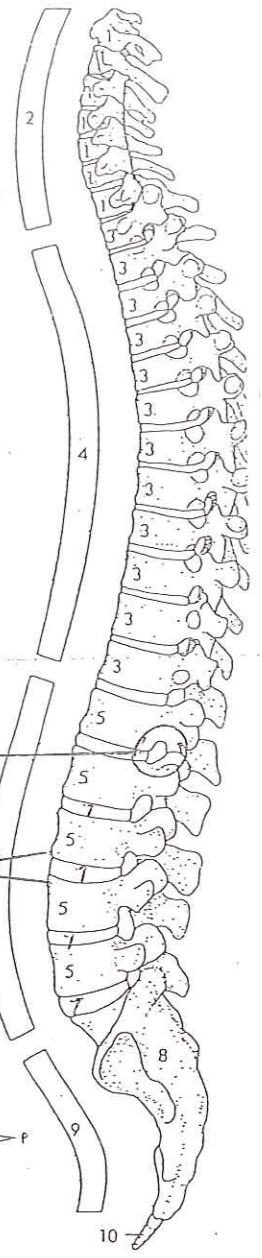
Date.

Per.



The Vertebral Column

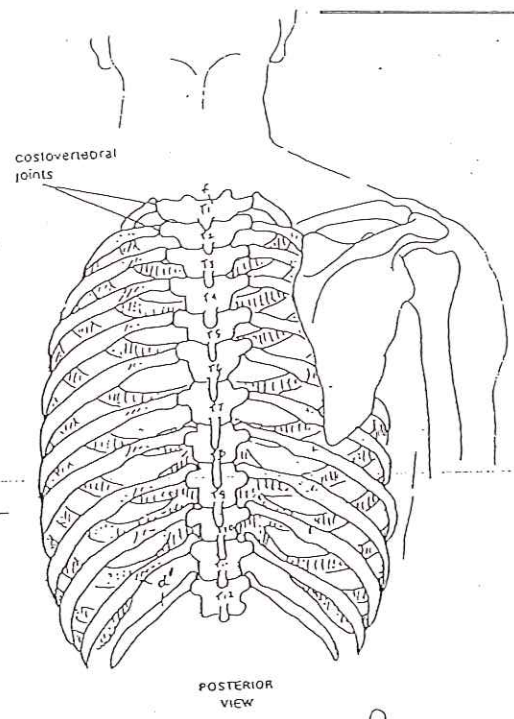
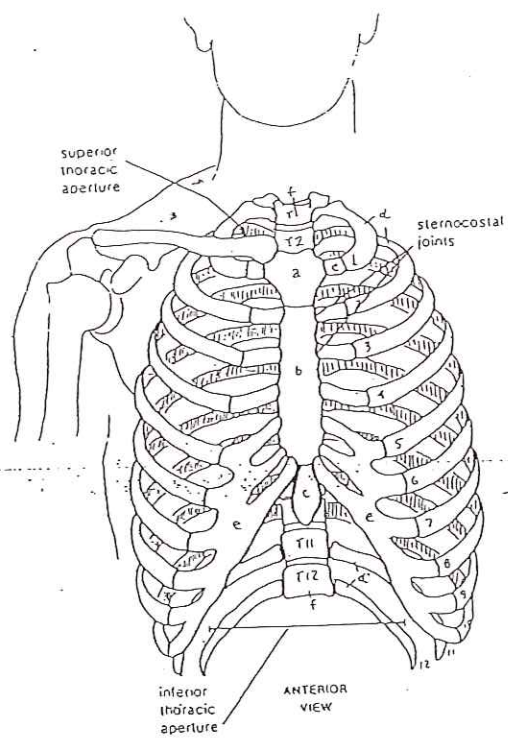
- CERVICAL VERTEBRA.
- CERVICAL CURVE.
- THORACIC VERTEBRA.
- THORACIC CURVE.
- LUMBAR VERTEBRA.
- LUMBAR CURVE.
- INTERVERTEBRAL DISCS.
- SACRUM.
- SACRAL CURVE.
- COCCYX.



A _____

B _____

C _____



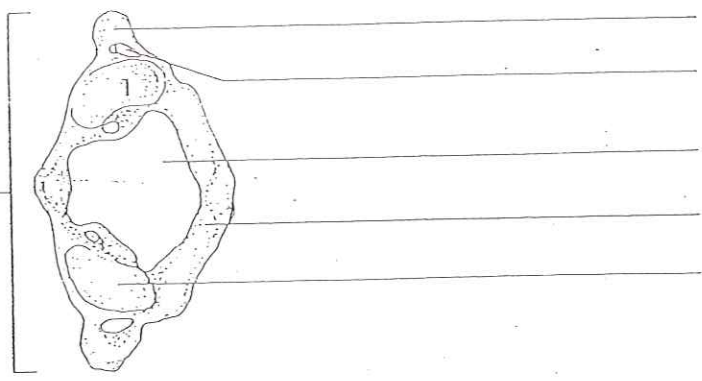
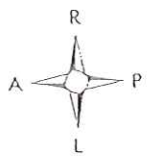
SKELETAL SYSTEM / THORAX.

STERNUM: *
 MANUBRIUM_a
 BODY.
 XIPHOID PROCESS.

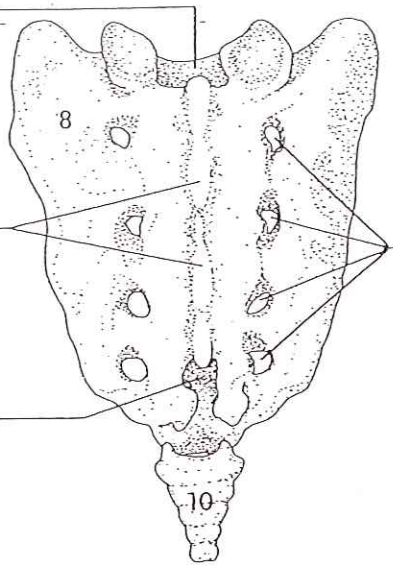
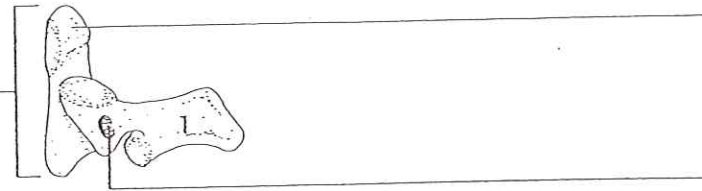
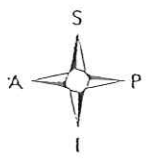
12 RIBS: _d
 7 TRUE _d
 5 FALSE _d
 (2 FLOATING) _{d'}

12 COSTAL CARTILAGES. 12 THORACIC VERTEBRAE_f

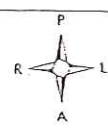
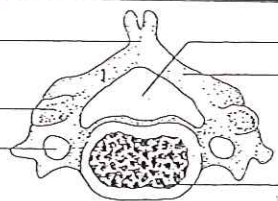
me



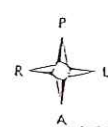
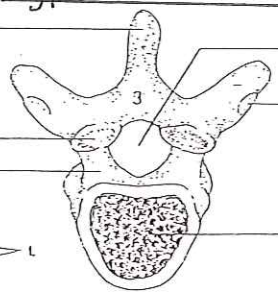
me



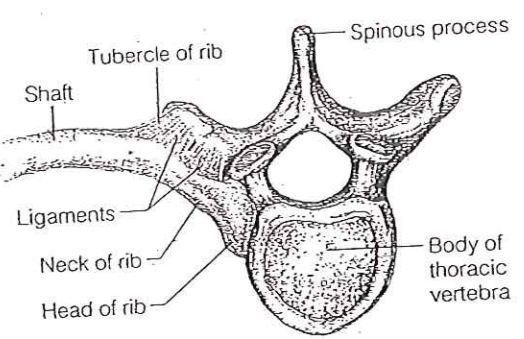
Type:



Type:



Type:



2

