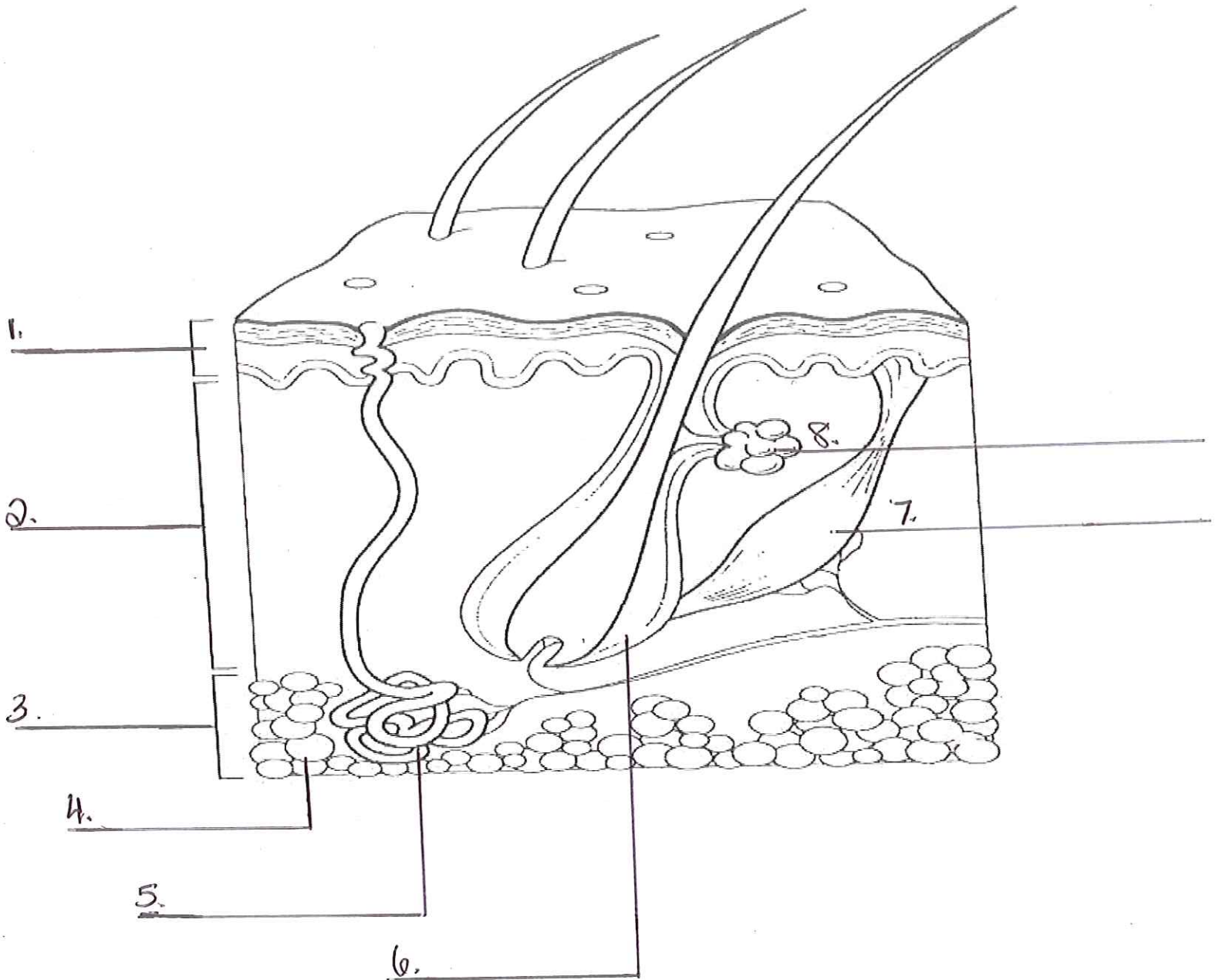


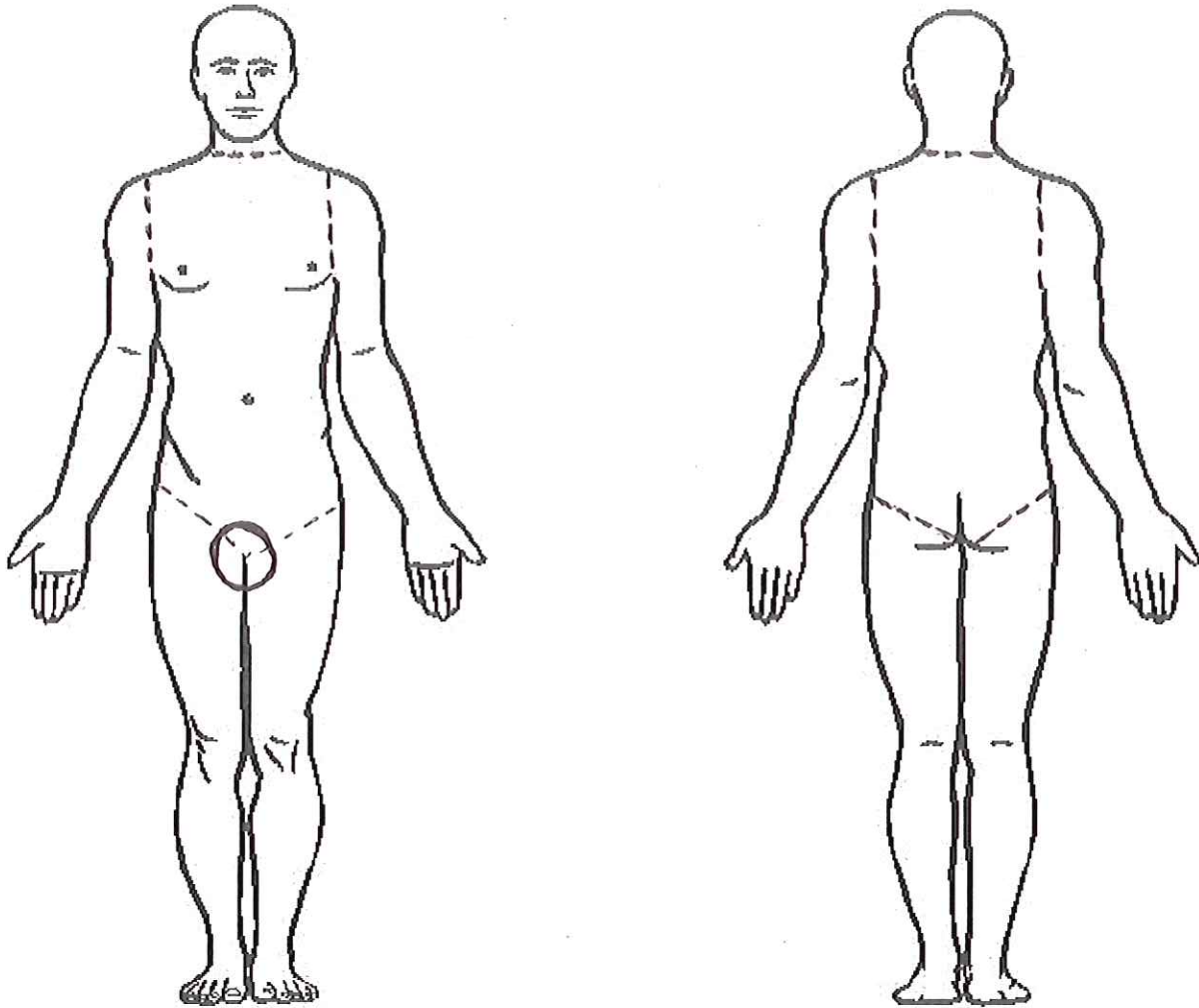
Skin Diagram

Directions: Label each blank using the textbook, page 149. Summarize each structure using a few words.



Burn Diagram

Directions: Label the percentages for burns on the diagram below. Refer to page 163 in the textbook. After labeling the percentages, answer the questions.



1. A woman suffers burns on the front of her left arm and the anterior portion of her face. What percent of her body is burned?
2. A man gets burned from a fire. Both of his arms are burned in the front and back, the anterior and posterior trunk are burned, and his entire face is burned. What percent of his body is burned?
3. A child suffers from burns to the entire right leg, the genital (perineum) region, and the anterior portion of the trunk. What percent of the body is burned?
4. Why does someone who suffers from 3rd degree burns not feel pain?
5. What parts of the skin are burned in a 2nd degree burn?