

Name: _____

Period: _____

9. Figure 5-3, A-C shows lateral, anterior, and inferior views of the skull. Select different colors for the bones listed below and color the coding circles and corresponding bones in the figure. Complete the figure by labeling the bone markings indicated by leader lines.

- yellow ○ Frontal
- dk. green ○ Parietal
- red ○ Mandible
- purple ○ Maxilla
- pink ○ Sphenoid
- brown dots ○ Ethmoid
- orange ○ Temporal
- grey ○ Palatine
- brown ○ Occipital
- lt. blue ○ Zygomatic
- dk. blue ○ Nasal
- lt. green ○ Lacrimal
- blue dot ○ Vomer

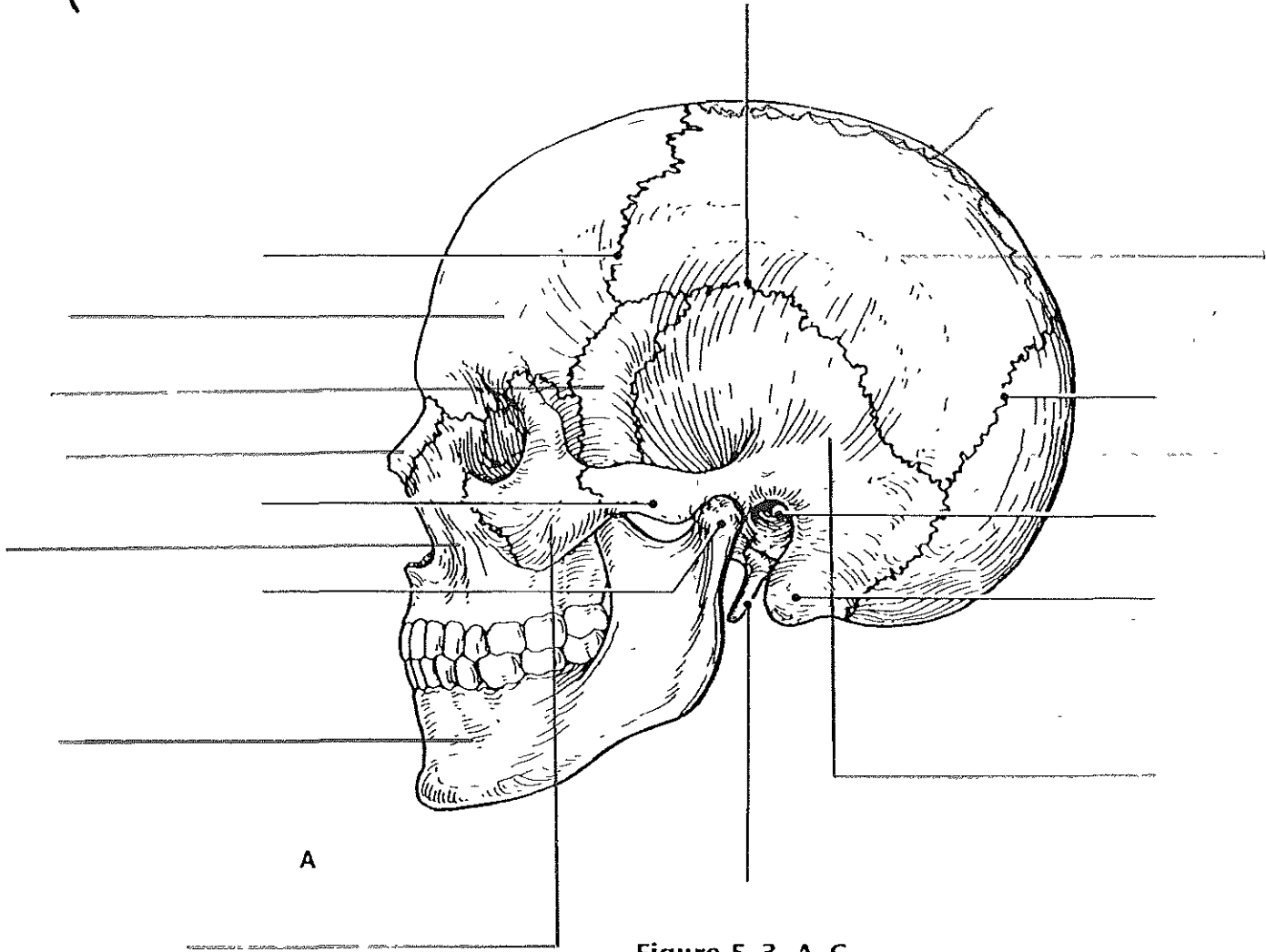


Figure 5-3, A-C

3. Match the bone names listed in the key choices with the following bone descriptions. (Note that some descriptions apply to more than one bone.)

- _____ 1. Connected by the frontal suture
- _____ 2. Connected by the lambdoidal suture
- _____ 3. Connected by the squamous suture
- _____ 4. Connected by the sagittal suture
- _____ 5. Cheekbone
- _____ 6. Superolateral part of cranium
- _____ 7. Contains olfactory foramina
- _____ 8. Posterior part of the hard palate
- _____ 9. Posteriormost part of cranium
- _____ 10. Has two turbinates as part of its structure; also contributes to the nasal septum
- _____ 11. Foramen magnum contained here
- _____ 12. Site of the sella turcica
- _____ 13. Houses hearing and equilibrium receptors
- _____ 14. Forms the bony eyebrow ridges and roofs of orbits
- _____ 15. Forms the chin
- _____ 16. The only bone connected to the skull by a freely movable joint
- _____ 17. Site of mastoid process
- _____ 18. Contains the mental foramina
- _____ 19. Neither a cranial nor a facial bone
- _____ 20. _____ 21. Four bones containing paranasal sinuses
- _____ 22. _____ 23.
- _____ 24. Bears an upward protrusion called the crista galli
- _____ 25. Keystone bone of cranium
- _____ 26. Tiny bones with openings for the tear ducts
- _____ 27. Bony part of nasal septum

Key Choices

- A. Ethmoid
- B. Frontal
- C. Hyoid
- D. Inferior conchae
- E. Lacrimal
- F. Mandible
- G. Maxillary
- H. Nasal
- I. Occipital
- J. Palatine
- K. Parietal
- L. Sphenoid
- M. Temporal
- N. Vomer
- O. Zygomatic