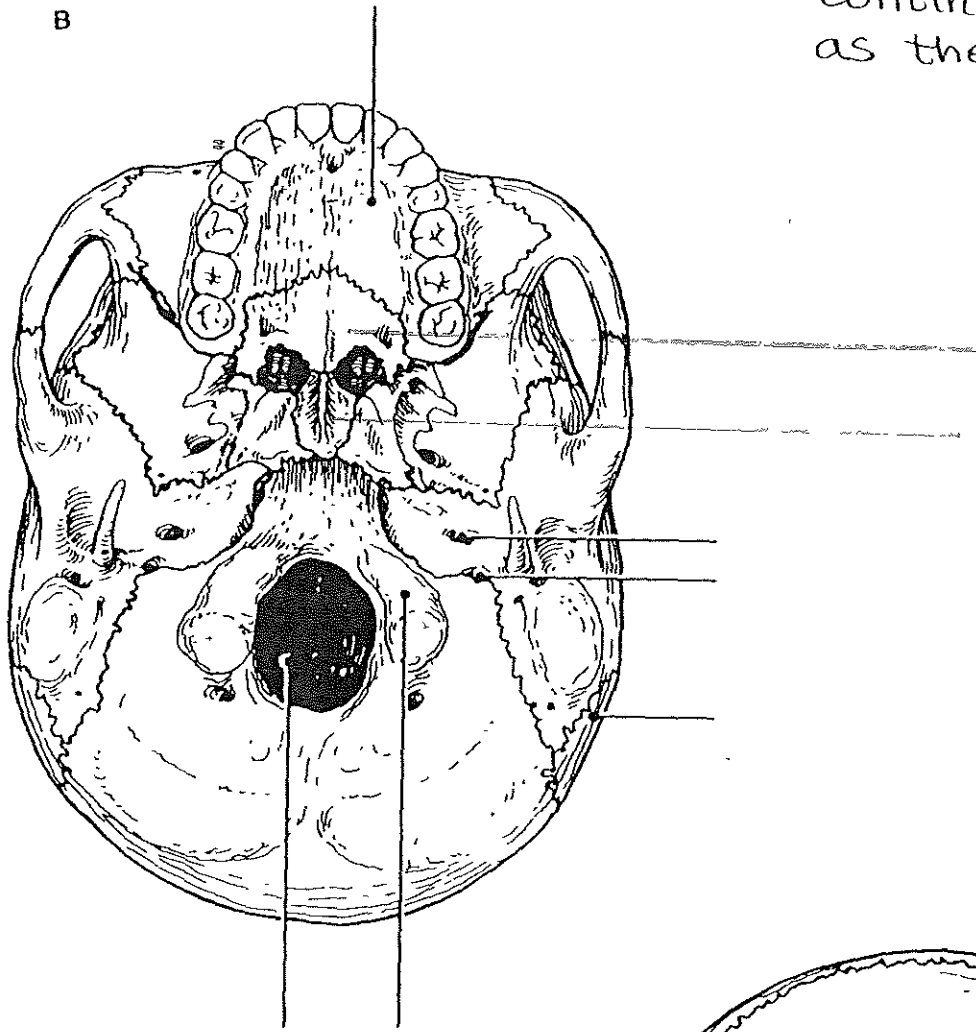
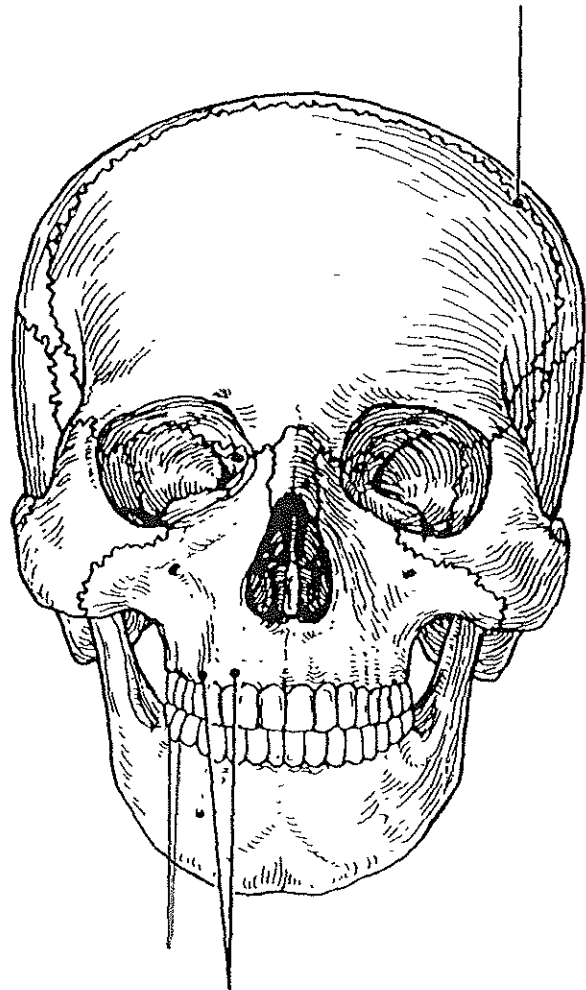


Continue same colors as the first page.

B



C

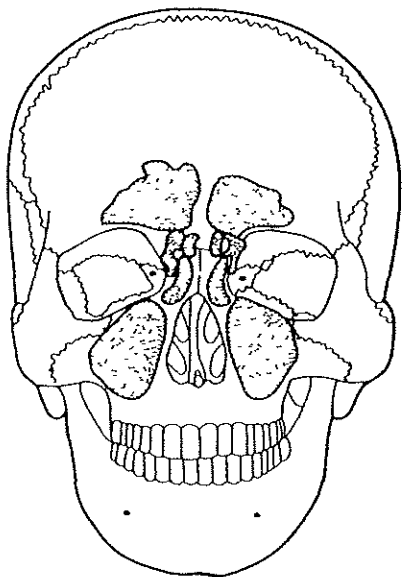


4. Anterior and lateral views of the skull, showing the positions of the sinuses, are shown in Figure 7.3. First, select different colors for each of the sinuses and use them to color the figure. Then, briefly answer the following questions concerning the sinuses.

1. What are sinuses? _____
2. What purpose do they serve in the skull? _____

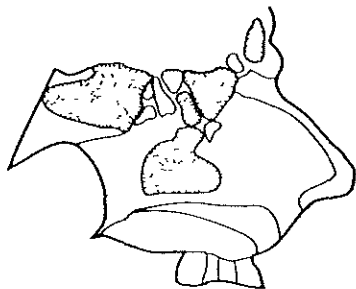
3. Why are they so susceptible to infection? _____

4. What is the function of the mucus-secreting mucosae? _____



A.

- Sphenoid sinus
- Frontal sinus
- Ethmoid sinuses
- Maxillary sinus

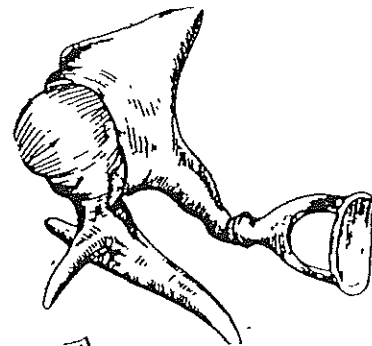


B.

Figure 7.3

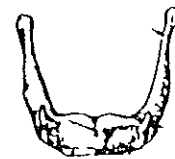
5. Complete the following table, which pertains to important bone markings on skull bones. Insert your answers in the spaces provided under each heading.

Bone Marking(s)	Skull Bone	Function of Bone Marking
	Mandible	Attachment for temporalis muscle
Carotid canal		
		Supports partly encloses pituitary gland
Jugular foramen		
		These form anterior two-thirds of hard palate
		Attachment site for several neck and tongue muscles
Optic foramina		
		Pass olfactory nerve fibers
		Attachment for ligamentum nuchae and neck muscles
Mandibular condyles	Mandibles	
Mandibular fossa		
Stylomastoid foramen		

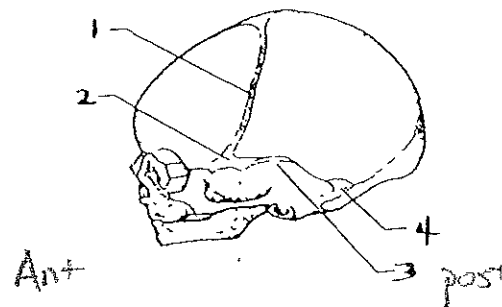


Code and color

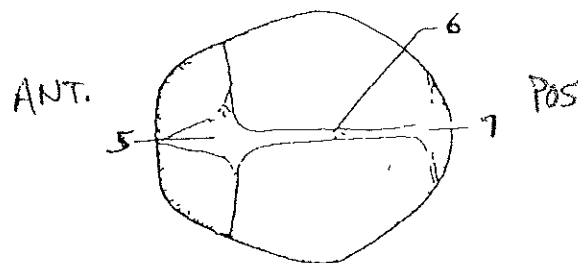
- Malleus
- Incus
- Stape



Label:



- 1.) _____
- 2.) _____
- 3.) _____
- 4.) _____



- 5.) _____
- 6.) _____
- 7.) _____